



NEW

Steel Tubular Doors

Clear vision with durable frames for demanding daily use

HÖRMANN





Contents

Product Features	4-5
Steel Tubular Doors and Partition System	6-9
Tubular Glass Electric Sliding Door HTG	10-11
Surface Colors	12-13
Profile Structure and Installation of Steel Tubular Doors	14-15
System Styles of Steel Tubular Doors	16-17
Dimensions of Tubular Glass Electric Sliding Door HTG	18-19



1

Fully upgraded products

Hörmann steel tubular door and partition system are made of Germany- imported steel tubular profiles, equipped with large-size transparent glazing and sophisticated hardware. Thanks to the high strength and high melting point of steel profiles, Hörmann steel tubular doors are sturdy and durable with much slimmer frames, fully meeting the dual needs of transparency and aesthetics of modern buildings.

- High-quality imported steel tubular profiles contribute to better appearance and functions;
- Complete quality control ensures good quality in every detail;
- Highly efficient customized design proposals assisted by powerful specialized software.

2

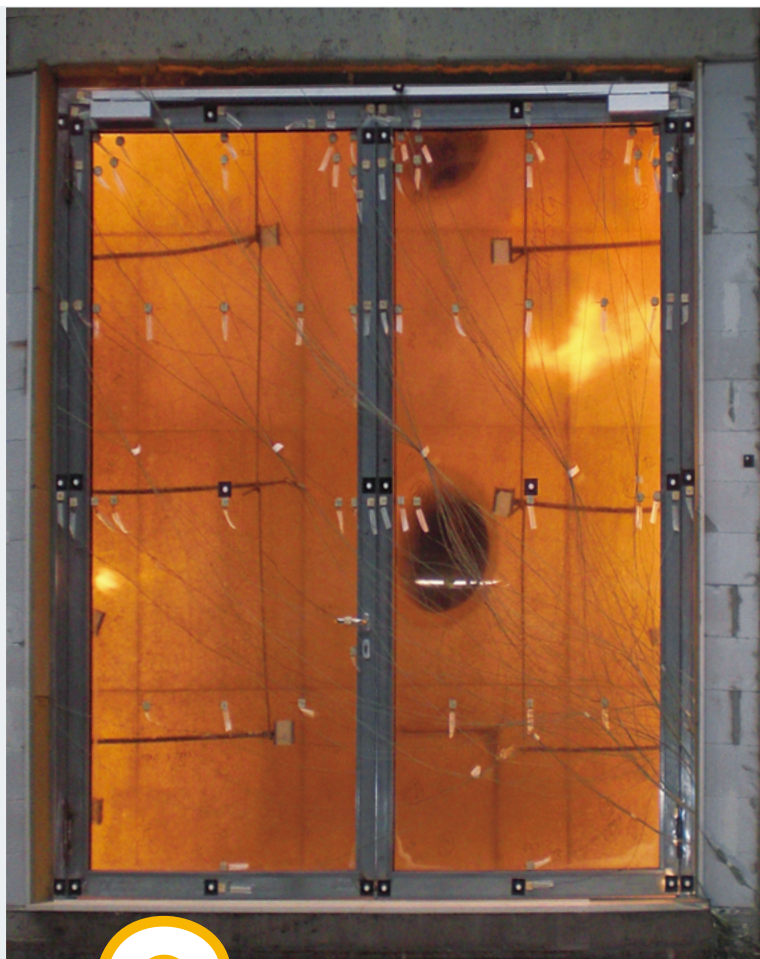
A wider range of sizes

Hörmann can not only provide steel tubular doors with a complete series of products, but also much bigger sizes, addressing an increasing number of personalized requirements.

For all products, including standard, thermal insulation and fire-rated series, the maximum size of single-leaf doors can reach 1.5 x 3 m, whilst for double-leaf doors, it can reach 3 x 3 m.

Hörmann steel tubular doors would inspire the designers and create more possibilities for trendsetting modern architectural projects.





3

Extensive product portfolio

Hörmann has launched a complete product series of steel tubular doors and partition system to meet the requirements of different application areas. Hörmann will keep up with the market demand and develop more upgraded steel tubular products.

- **HPW-Fire:** fire-rated partition system
- **H55:** standard tubular doors and top light/side elements
- **H55E60:** fire-rated tubular doors
- **H70:** thermal-insulated tubular doors and top light/side elements
- **H70EI60:** fire-rated tubular doors
- **H70EI90:** fire-rated tubular doors
- **HTG:** tubular glass electric sliding doors

► Hörmann fire-rated products are tested according to Chinese standard GB12955-2008;

► **HPW-Fire** fire-rated partition system can be combined with other Hörmann tubular doors, please send your request to Hörmann consultant.



4

More combination styles

Hörmann steel tubular products, elegant and practical, can be flexibly combined according to your individual design and functional requirements. They would offer you more inspirational ideas. For example, single or double-leaf doors in different sizes can be combined with extra top light or side elements to satisfy the requirements for area separation and large opening daylighting.



H55, H70
Standard / thermal insulated
Steel tubular doors and top / side light

H55 and H70 standard/thermal insulated steel tubular doors are made of H55 and H70 steel tubular profiles, and can be combined with top light or side elements, used for both internal and external applications. Sturdy profiles equipped with big-size transparent glass bring you a better visual experience and create an impression of space.



H55E60, H70EI60, H70EI90
Fire-rated / fire-rated and heat insulated
Steel tubular doors

H55E60 fire-rated steel tubular doors, made of H55 steel tubular profiles and equipped with big size double layer fire-proof glass, certified in 60 min. fire resistance test in accordance with Chinese standard GB12955-2008.

H70EI60/90 fire-rated steel tubular doors, made of H70 steel tubular profiles and equipped with big size triple layer fireproof glass, certified in 60/90 min. fire resistance & heat insulation tests in accordance with Chinese standard GB12955-2008, meeting dual requirements of fire resistance and heat insulation at the same time.



HPW-Fire
Fire-rated and heat insulated
Partition system

HPW-Fire fire-rated partition system is made of specialized steel tubular profiles, highlighted with only a 45 mm profile width from the front view, aesthetically slim yet sturdy. It is certified in both 60 min. fire resistance and heat insulation test, satisfying the design requirements of building fire protection. It can be combined with other Hörmann doors according to your different applications.

Technical data of partition system

Door code	HPW-Fire
Product series	Fire-rated and heat insulated
Profile width	45 mm
Frame depth	120 mm
Surface	Powder coated color
Glass type	Double layer fire-proof glass
Glass thickness	22 mm
Application	Internal use
Max. size of each unit	1500 x 3000 mm
Max. size of structure opening	Height up to 3000 mm; No strict limitation in width
Top light / side element	-



Technical data of steel tubular doors

Door code	H55	H55E60	H70	H70EI60	H70EI90
Profile depth	55 mm	55 mm	70 mm	70 mm	70 mm
Product series	Standard	60 min. fire-rated	Thermal insulated	60 min. fire-rated and heat insulated	90 min. fire-rated and heat insulated
Standard glass	6 mm single layer tempered glass	14 mm double layer fire-proof glass	25 mm double layer tempered glass	25 mm triple layer fire-proof glass	34 mm triple layer fire-proof glass
Optional glass	10 mm single layer tempered glass 8 mm single layer sandwich glass 25 mm double layer tempered glass	-	-	-	-
Application	Internal/external use	Internal use	Internal/external use	Internal use	Internal use
Max. opening size of single-leaf door	1500 x 3000 mm	1500 x 3000 mm	1500 x 3000 mm	1500 x 3000 mm	1500 x 3000 mm
Max. opening size of double-leaf door	3000 x 3000 mm	3000 x 3000 mm	3000 x 3000 mm	3000 x 3000 mm	3000 x 3000 mm
Max. size of side element	3000 x 3000 mm	Unavailable	3000 x 3000 mm	Unavailable	Unavailable
Max. size of top element	3000 x 1000 mm	Unavailable	3000 x 1000 mm	Unavailable	Unavailable

Note: i. Dimensions in above table are opening dimensions and width x height (W x H);
ii. Fire-rated series products are tested according to Chinese standard GB12955-2008.



Steel tubular doors



Leaf and frame of steel tubular doors are sturdily connected by welded galvanized steel 3D adjustable hinges, with the same color coating to leaf and frame, creating a unified appearance.



Door closer with arm / sliding rail and concealed door closer are all available for steel tubular doors, providing proper closing force for doors in full size range.



Ergonomic-designed crank handles are available for steel tubular doors, it is safe and comfortable to hold, effectively avoiding accidental injury to fingers.



Narrow lock set for tubular doors, safe and secure.



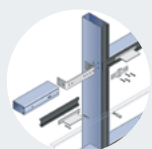
HPW-Fire fire-rated partition system



22 mm double-layer fireproof glass is standard for the fire-rated partition system. Filling with nanoscale inorganic silicon refractory, the glass guarantees excellent clarity with a high transmittance rate of 84%, and limits the risk of yellowing or fogging over time.



HPW-Fire is made of imported steel tubular profiles which are formed by 1.5 mm steel sheet through advanced cold-form production process. Thanks to the exceptional straightness and high bending strength of the profiles, HPW-fire is extraordinarily sturdy and durable though the profile front view is only 45 mm wide. This also brings a better slim appearance and a bigger light transmission area.



The screw fitting method designed for beam connection not only eliminates the need of welding, simplifies on-site installation, but also is capable to release the deformation of components caused by fire, so that to fulfill the 60-minute fire resistance and heat insulation.



Tubular Glass Electric Sliding Door HTG

Tubular glass electric sliding door HTG features a fully transparent appearance, automatic and stable door operation, and intelligent detection. These make it a wise choice for both main building entrances and internal passageways.

Design Highlights

- H55 imported steel tubular profiles and large-sized tempered glass bring the door leaf a sturdy structure and brightness. The connections of tubular profiles are seamlessly polished for a smooth and flush look.
- Automatic door opening in a sliding motion and automatic door closing with timer function. There is no need for pivoting radius space of door leaf.
- Brushless DC motor, noiseless drive rail system, and concealed guide wheel under door leaf are as standard for smooth and quiet operation.
- With an automatic rebound function upon obstruction and infrared protection photocell, the dual safety guarantee brings pedestrians a safe and pleasant passage experience.
- Foot switch, non-contact switch, infrared radar, and remote control are available for convenient and smart door opening.
- Max. door width is up to 1500 mm for single-leaf door and 3000 mm for double-leaf door, allowing large clear passage width for high traffic and large facilities.



Side light

The sides of HTG can be equipped with tubular side lights, designed specifically for main building entrances, taking into account both structural robustness and aesthetic appearance.



Intelligent detection with radar

Microwave radar or infrared radar is available to detect pedestrians and automatically open and close with a timer function. Its convenient and efficient automatic access satisfies the demands of main building entrances with high crowd flow.



Large-range transparency

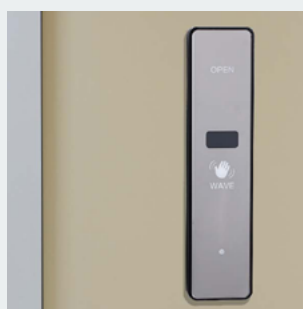
The more extensive range of tempered glass not only allows more light into the room, but also facilitates clear visibility, which is especially suitable for functional areas with a need for visual observation, such as hospital wards.



Infrared protection photocell



Brush sealing



Non-contact switch



Foot switch

Technical data of tubular glass electric sliding door HTG

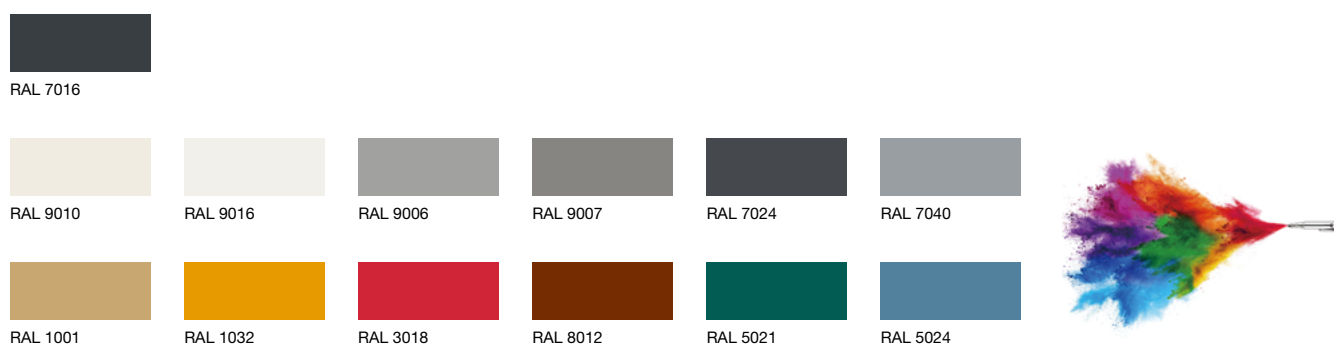
Frame depth	66 mm
Tubular profile depth	55 mm
Standard glass	6 mm single-layer transparent tempered glass
Opening speed	15 - 55 cm/s adjustable
Closing speed	15 - 55 cm/s adjustable
Max. opening size (W x H)	Single-leaf 1500 x 3000 mm
	Double-leaf 3000 x 3000 mm



Electrostatic Powder Coating Surface

Various colors by powder coating are available for the surface of steel tubular doors and partition system. The resin-based powder is coated and adsorbed evenly on the surface of steel profiles by electrostatic effect, melt at high temperature, and then solidifies into coating film after cooling down. The film thickness is about 70-120 μm , uniform and dense, with bright color. It also has very good performance in weather-resistance, staying bright and glossy for a long time.

The standard color is RAL 7016 anthracite grey; more than 100 kinds of RAL colors can be freely chosen without any surcharge. If required, more customized colors are also available to match your individual building design requirements.



A RIOT COLORS FOR YOUR CHOICE >>>



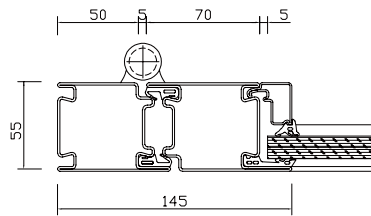
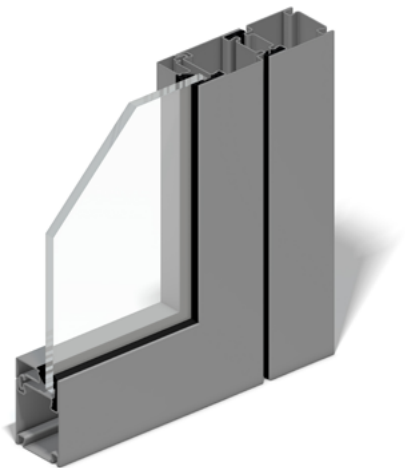
In addition, in order to meet your diversified and customized needs, surface coating with fluorocarbon protection powder is a good option. This fluorocarbon protection coating has better weather resistance and stronger UV resistance properties, and is three times shining than the conventional coating; Its high performance has passed the sun exposure, humidity, heat and salt spray tests.

* The colors shown above are demonstrative examples. Optional surface colors include but are not limited to the above. The surface colors illustrated in this brochure are subject to the limitations of the printing process and deviated from the actual effects. Please contact Hörmann sales for more details about colors and surfaces.

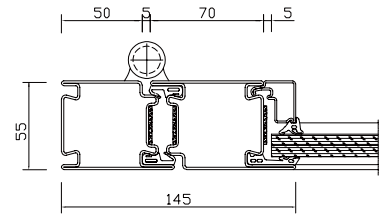


Profile Structure of Steel Tubular Doors

Profile section of H55 products

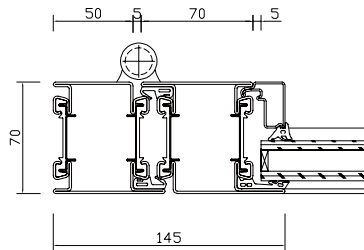
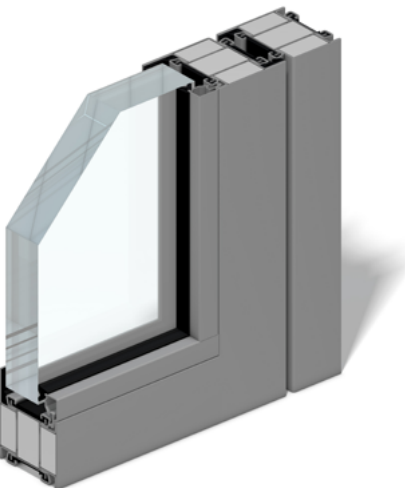


H55 standard product

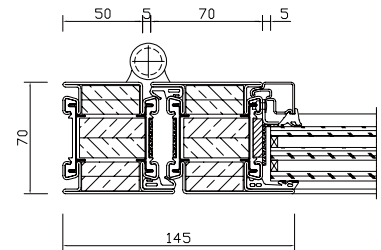


H55E60 fire-rated product

Profile section of H70 products

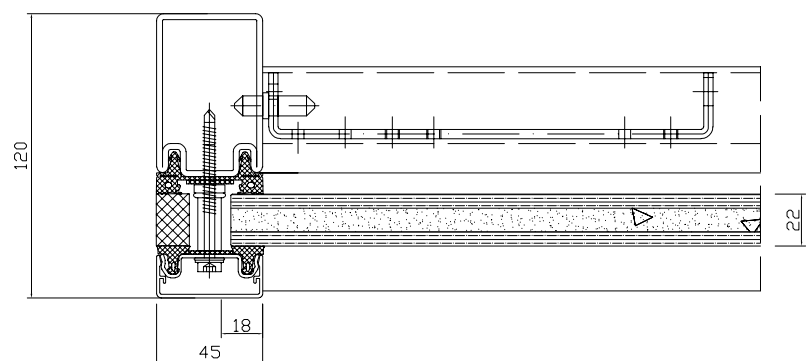
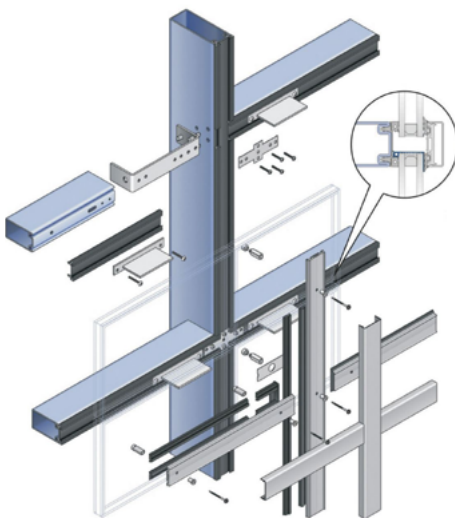


H70 thermal insulated product



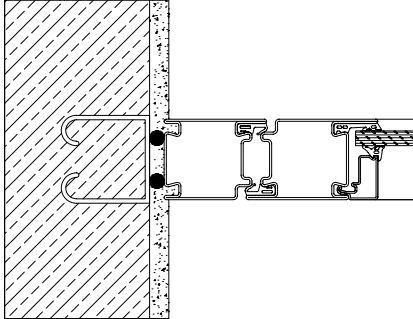
H70EI60/90 fire-rated and heat-insulated product

Profile section view of HPW-fire

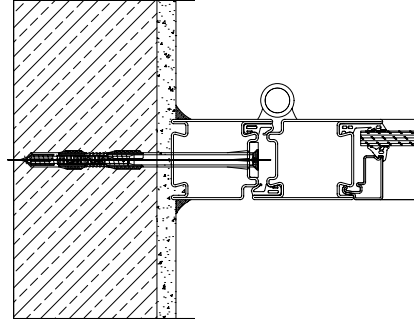


HPW-Fire fire-rated and heat-insulated partition system

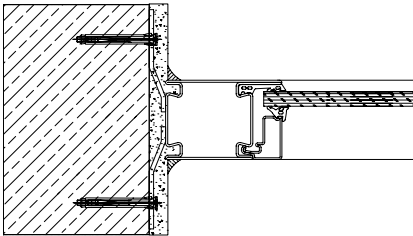
Installation method



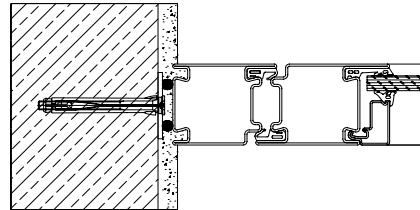
With weld on anchor plate - type D1 (standard)



With central hole in frame - type A



With tie plate external to frame - type B



Weld with plug/screw fitting anchor plate - type D2

Partition system combination

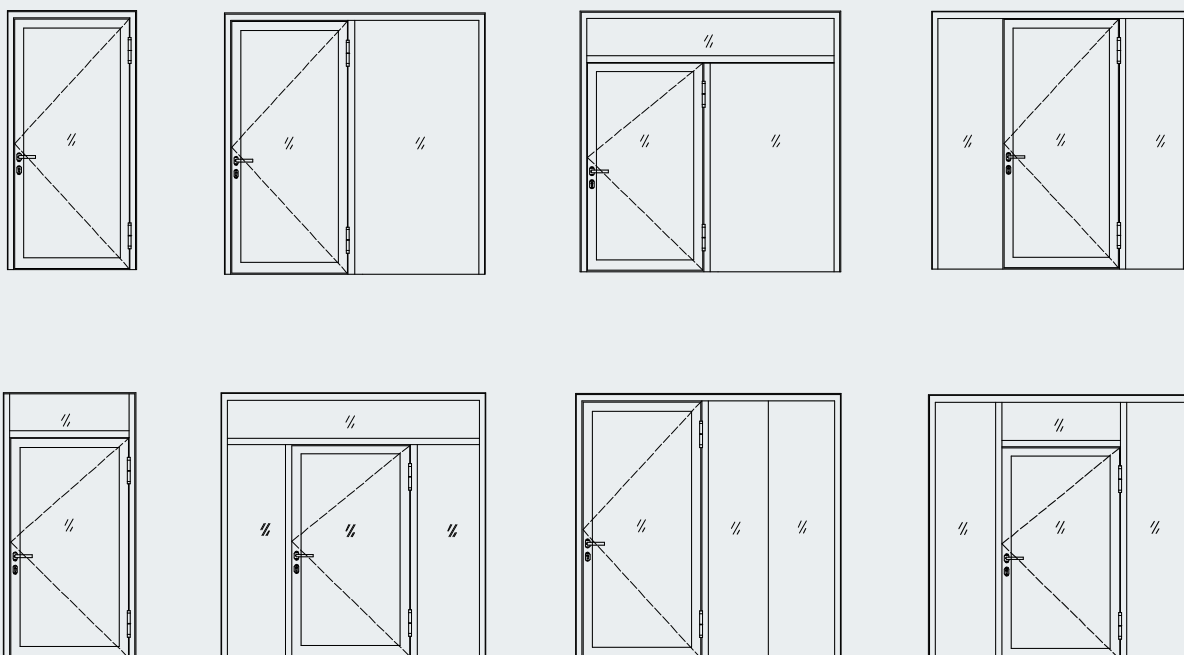
HPW-Fire partition system can be combined with other Hörmann tubular doors according to your functional and design requirements. For example, *HPW-Fire* partition system can be combined with *H70EI* fire-rated tubular door to create a fire-rated compartment with transparency and aesthetics.



Single Leaf System Styles of Steel Tubular Doors



Styles for single-leaf door



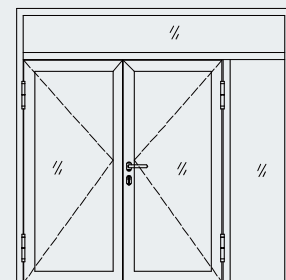
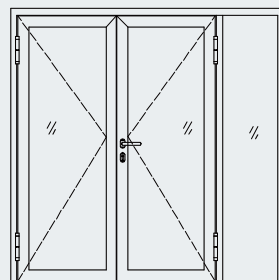
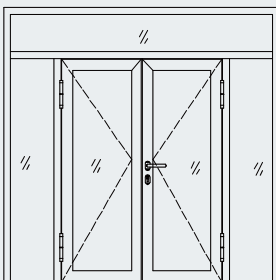
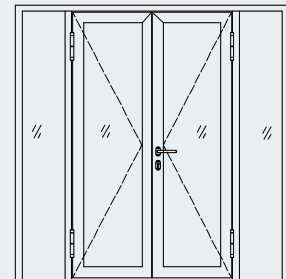
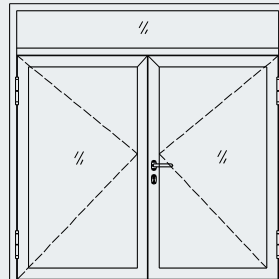
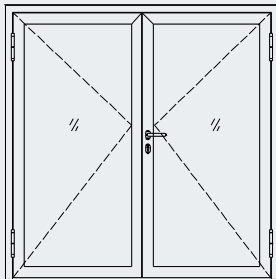
- More combination styles are available on request.
- Top light/side element is temporarily unavailable for fire-rated products, please consult if required.
- HPW-Fire fire-rated partition system can be combined with Hörmann tubular doors according to functional and design requirements.



Double Leaf System Styles of Steel Tubular Doors



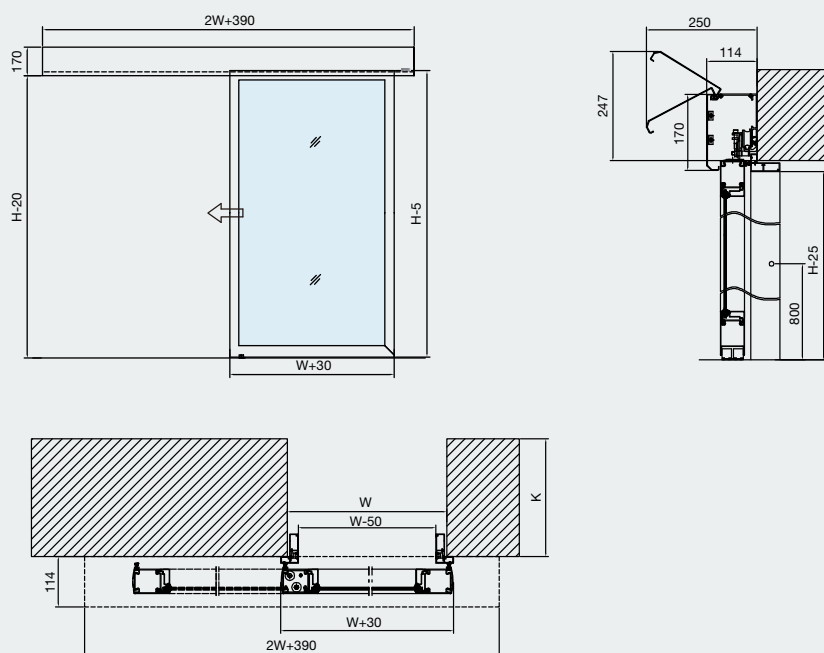
Styles for double-leaf door



- More combination styles are available on request.
- Top light/side element is temporarily unavailable for fire-rated products, please consult if required.
- HPW-Fire fire-rated partition system can be combined with Hörmann tubular doors according to functional and design requirements.

Dimensions of Tubular Glass Electric Sliding Door HTG

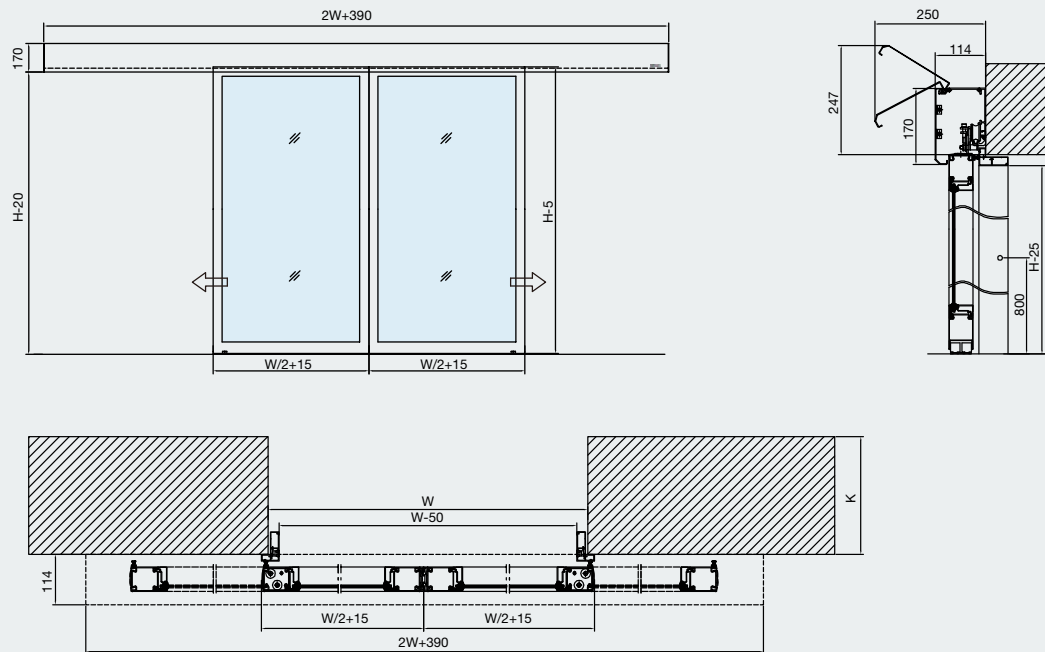
Single-leaf HTG-1





Dimensions of Tubular Glass Electric Sliding Door HTG

Double-leaf HTG-2



Hörmann: Quality without Compromise



Hörmann KG Amshausen, Germany



Hörmann KG Antriebstechnik, Germany



Hörmann KG Brandis, Germany



Hörmann KG Brockhagen, Germany



Hörmann KG Dissen, Germany



Hörmann KG Eckelhausen, Germany



Hörmann KG Freisen, Germany



Hörmann KG Ichtershausen, Germany



Hörmann Alkmaar B.V., Netherlands



Hörmann Legnica Sp. z o.o., Poland



Hörmann LLC, Montgomery IL, USA



Hörmann Flexon LLC, Burgettstown PA, USA



Hörmann Beijing, China



Hörmann Tianjin, China



Hörmann Changshu, China



Shakti Hörmann Ltd. India

Hörmann is a professional manufacturer worldwide that offers you a complete range of major building products from one source. We manufacture in specialized factories using the advanced production technologies. The comprehensive manufacturing, sales and service network in Europe, Asia and America makes Hörmann your strong international partner for the high-quality construction. "Quality without Compromise".

GARAGE DOORS
OPERATORS
DOORS
PARTITION WALLS
INDUSTRIAL DOORS
LOADING TECHNOLOGY



All information and images are protected by copyright. No part of this brochure may be reproduced without our permission. Subject to changes.

Print: 09. 2024 (Issue: 09. 2024) 1121120254
Some of the doors shown in this brochure have special features and therefore do not always represent the standard version.

www.hoermann.com